

OPITZ

angus ranch

Selling Sons of

Koupals Beyond 1066

Koupals Junction 2166

Koupals Pathfinder 2093

OAR Black Cedar 216

10th Annual

MAY 2, 2025, at 1:00 pm MST

St. Onge Livestock

St. Onge, SD

Koupals B&B Beyond 1066



Sale Day Contacts:

Tom Opitz: 605-268-4343
Brianna Opitz: 605-201-1110
Cody Opitz: 605-679-8644

Customer Appreciation:

Happy hour following the Opitz Angus sale at St. Onge Bar. Hope to see you there!

Broadcasting:

The sale will be broadcasted with online bidding available on Cattle USA and DVauction under St. Onge Livestock. Tune into www.dvauction.com or <https://www.cattleusa.com> between 1:00-1:30 pm MST.

Acknowledgements:

All Veterinary services were done by The Cattle Team at Northwest Veterinary in Parkston, SD. The bulls have been semen tested prior to sale day and are 100% good. They have recently been vaccinated with calf hood, hoof rot, preggaurd 10, anthrax, MultiMin, pink eye shot, injectable dewormer, and have been poured for lice. A pink eye and hoof rot booster is recommended before turn-out. Each bull has been genomic tested with Ag-Boost (Zoetis) which provides parentage verification as well as increased accuracy and predictability.

Transportation:

Buyers take full possession at the time of the sale. Please bring your trailers with you on sale day. To assist our customers, we will have a trailer heading back towards Sioux Falls, SD. Talk to Tom to make arrangements.

Terms & Conditions

Terms: Cash or check payable during or after the sale before cattle will be released. Each animal will be at the buyer's risk immediately after the animal is sold. Bring your trailer sale day. Bulls need to be taken home following the sale.

Herd Health: All cattle will be sold in compliance with the health laws of the State of South Dakota. Health papers will be available. The bulls will be semen tested prior to sale day.

Please Note: All Persons attending this sale do so at their own risk legal or otherwise, for their safety or the behavior of the animals. The owner, sale management and the sale staff assume no liability for property loss or any accidents that may occur.

Announcements: Any announcements made the day of the sale take precedence over material printed in the sale catalog or any other advertising. We reserve the right to make any addition or withdraw any sale lot not meeting our specifications prior to sale time.

**THANK YOU**

Our family would like to welcome you to the
10th Annual Opitz Angus Bull Sale.
If you have any questions about the bulls, feel free to
call Tom at 605-268-4343.

We look forward to visiting with you on sale day.

Tom & Barb
Bri, Morgan, Brooke, & Cody

OAR BEYOND 411

KROUPALS B&B INFINITY 9012
KROUPALS B&B BEYOND 1066
 B&B BLKBD PROGRESS 3044

KROUPALS B&B DETAIL 7070
 B&B ZARA 6078
 LIMESTONE REAL Mc COY W831
 B&B BLKBD PROGRESS 002

OAR 611 of 1i2
OAR 96B5 of OAR 611
 OAR 6B5 of CHINNOOK 786

RITO 1i2 of 2536 RITO 6i6
 ALAN DALE FOREVER LADY 07L
 CAR CHINNOOK 786
 OAR B5R of PRIME RIB ELITE

DOB				BW	WW	YW	TEST GAIN				WDA	Scrotal		
4/13/2024				86	900	1,477	3.82				3.8	42 cm		
CED	BW	WW	YW	MILK	DOC	BW PCT	WW PCT	YW PCT	SC PCT	IMF PCT	REA PCT	RIB PCT	TEND PCT	
0	3.5	70	120	21	20	85	42	48	3	91	28	54	50	

Quite the Beyond calf here. He is a herd bull prospect with eye appeal that can do it both with siring a set of steers and keeping every replacement heifer. Excellent feet and tremendous disposition. Top 3 % in scrotal size & 28 % ribeye. 411 has 30 years of breeding in his pedigree, going back to one of our original donor cows. His mother is very fertile and has never missed, she has always been in the first cycle. If you are selling your calves at weaning time, he was truly the top weaning weight calf of the pen.



OAR BEYOND 412

KOUPALS B&B INFINITY 9012
KOUPALS B&B BEYOND 1066
 B&B BLKBD PROGRESS 3044

KOUPALS B&B DETAIL 7070
 B&B ZARA 6078
 LIMESTONE REAL Mc COY W831
 B&B BLKBD PROGRESS 002

OCC EMBLAZON 854E
REDLAND 27 P of EMBLAZON 854E
 REDLAND ANGUS BREEDING

DHD TRAVELER 6807
 DIXIE ERICA of CH 1019
 REDLAND ANGUS BREEDING
 REDLAND ANGUS BREEDING

DOB				BW	WW	YW	TEST GAIN				WDA	Scrotal	
4/5/2024				78	748	1220	2.1				3.3	36 cm	
CED	BW	WW	YW	MILK	DOC	BW PCT	WW PCT	YW PCT	SC PCT	IMF PCT	REA PCT	RIB PCT	TEND PCT
7	1.2	50	90	29	11	35	88	88	59	68	45	27	80

If you are looking for an easy keeping, middle of the road, type of cattle with extra length, here is your bull. Last year, his half-brother was the second high selling bull who was sold to the Quaschnick Ranch, Herreid, SD.

OAR ARSENAL 413

CONNEALY PACKER 547
CONNEALY ARSENAL 2174
 BLACK RICE of CONANGA 9529

FELTONS MEAT PACKER 62
 BESTRELLE of CONANGA 539
 CONNEALY FORWARD
 BLACK RITA of CONANGA 123

KOUPAL ANGUS BREEDING
OAR 252 of KOUPAL ANGUS BREEDING
 KOUPAL ANGUS BREEDING

KOUPAL ANGUS BREEDING
 KOUPAL ANGUS BREEDING
 KOUPAL ANGUS BREEDING
 KOUPAL ANGUS BREEDING

DOB				BW	WW	YW	TEST GAIN				WDA	Scrotal	
3/28/2024				74	724	1356	4.99				3.5	41 cm	
CED	BW	WW	YW	MILK	BW PCT	WW PCT	YW PCT	SC PCT	IMF PCT	REA PCT	RIB PCT	DOC PCT	TEND PCT
9	0.47	65	127	29	22	55	36	25	82	30	83	26	75

Here is the thickest, calving ease, docile, and easy keeping calf on the sale. Recommend using on heifers. Out of a first calf heifer.





OAR PATHFINDER 414

KOUPALS B&B PATHFINDER 8106
KOUPALS B&B PATHFINDER 2093
 B&B YOUNG LUCY 9057

GDAR LOAD UP 7104
GDAR RACHEL 135
 GDAR RACHEL 9551

LT ENTERPRISE 5213
 B&B BLKBD PROGRESS 3015
 KOUPALS B&B DETAIL 7070
 B&B YOUNG LUCY 5038

SITZ RELOAD 411C
 GDAR FOREVER LADY 4522
 GDAR JUSTIFIED 6121
 GDAR RACHEL 5445

DOB		BW		WW		YW		TEST GAIN		WDA		Scrotal	
5/10/2024		73		676		1517		5.0		4.0		37 cm	
CED	BW	WW	YW	MILK	DOC	BW PCT	WW PCT	YW PCT	SC PCT	IMF PCT	REA PCT	RIB PCT	TEND PCT
8	0.67	64	116	23	25	25	56	54	70	85	20	22	98

He is the youngest calf on the sale. Calving ease deluxe with eye appeal, can use on heifers. Lots of goodies in this pedigree. If you are looking to increase milk production in your females, this will be the bull for you.

OAR JUNCTION JUNIOR 415

KOUPAL JUNCTION 037
KOUPAL B&B JUNCTION 2166
 B&B BLKBD PROGRESS 3015

KOUPAL BLACK CEDAR 754
OAR 26B of KOUPAL BLACK CEDAR 754
 OAR 6B

O C C JUNEAU 807J
 KOUPAL EBONETTE 734
 KOUPALS B&B IDENTITY
 B&B BLKBD PROGRESS 0049

COLE CREEK BLACK CEDAR 46 P
 KOUPAL ELBA 0187 JUNEAU
 OPITZ ANGUS BREEDING
 OPITZ ANGUS BREEDING

DOB		BW		WW		YW		TEST GAIN		WDA		Scrotal	
3/21/2024		83		800		1231		3.1		3.1		34 cm	
CED	BW	WW	YW	MILK	DOC	BW PCT	WW PCT	YW PCT	SC PCT	IMF PCT	REA PCT	RIB PCT	TEND PCT
8	0.85	61	100	29	16	29	68	77	71	56	35	9	68

Calving ease with top carcass numbers. Double bred Juneau 807J.



KOUPALS B&B INFINITY 9012
KOUPALS B&B BEYOND 1066
 B&B BLKBD PROGRESS 3044

KOUPALS B&B DETAIL 7070
 B&B ZARA 6078
 LIMESTONE REAL Mc COY W831
 B&B BLKBD PROGRESS 002

STROMMEN ANGUS BREEDING
STROMMEN 3164
 STROMMEN ANGUS BREEDING

STROMMEN ANGUS BREEDING
 STROMMEN ANGUS BREEDING
 STROMMEN ANGUS BREEDING
 STROMMEN ANGUS BREEDING

DOB				BW	WW	YW	TEST GAIN				WDA	Scrotal		
4/18/2024				93	805	1242	2.45				3.1	39 cm		
CED	BW	WW	YW	MILK	DOC	BW PCT	WW PCT	YW PCT	SC PCT	IMF PCT	REA PCT	RIB PCT	TEND PCT	
-1	3.7	72	124	27	25	87	32	39	23	72	15	63	50	

If you are looking for easy keeping, moderate frame, and top growth this is your guy. Another good one out of Beyond with an outstanding mother.

PRINCE of MALPAS
SVR PRINCE EDDA 8176F
 SINCLAIR LADY IDA 04F3 B154

JUMOR ERIC of SOUTHBURN
 PRIDE of MALVITA
 EMULLATION N BAR 5522
 N BAR LADY IDA X2912

SVR ERIC FOREVER 4148
SVR ENCHANTRESS 4542-0598H
 SVR ENCHANTRESS 3F1-4542

CANDOLIER FOREVER 376
 COLEMAN DIXIE ERICA 143
 CANDOLIER FOREVER 376
 S C C ENCHANTRESS 3F1-X412

DOB				BW	WW	YW	TEST GAIN				WDA	Scrotal		
1/25/2024				73	760	1039	3.82				2.6	40 cm		
CED	BW	WW	YW	MILK	DOC	BW PCT	WW PCT	YW PCT	SC PCT	IMF PCT	REA PCT	RIB PCT	TEND PCT	
11	-0.3	68	106	24	14	12	47	70	35	55	83	17	58	

If you are into foundation Wye genetics look no further. Here is one of the most unique calves we have ever raised. He is double bred original Candolier 376, who is the grandsire to the foundation Forever Lady bloodline. Please study this pedigree & keep every female possible. Calving ease & recommend using on heifers. Call me for more information because it is hard to explain.

OAR BEYOND 420

KOUPALS B&B INFINITY 9012
KOUPALS B&B BEYOND 1066
 B&B BLKBD PROGRESS 3044

KOUPALS B&B DETAIL 7070
 B&B ZARA 6078
 LIMESTONE REAL Mc COY W831
 B&B BLKBD PROGRESS 002

MARCYS 18 TRACTION 66-8
MARCYS 20 PRIDE 113-0
 MARCYS 17 PRIDE 29-7

JMB TRACTION 292
 MARCYS 13 ETHELDA E 15-3
 CB BLOCK PARTY 156
 MARCYS 04 PRIDE 171-4

DOB				BW	WW	YW	TEST GAIN				WDA	Scrotal	
4/18/2024				89	776	1489	4.85				3.8	38 cm	
CED	BW	WW	YW	MILK	DOC	BW PCT	WW PCT	YW PCT	SC PCT	IMF PCT	REA PCT	RIB PCT	TEND PCT
3	2.6	69	122	26	16	68	42	46	21	76	24	34	7

Big burly calf out of Beyond with a tender score of the top 7%. His mother is a big volume powerful cow. If you are selling beef off the farm, this would be a good option because who wants to eat tough steaks.

OAR BEYOND 421

KOUPAL BLACK CEDAR 754
OAR 216 BLACK CEDAR
 OAR 8605 of SAV RENOWN 3439

COLE CREEK BLACK CEDAR 46 P
 KOUPAL ELBA 0187
 SAV RENOWN 3439
 OAR 6490 of NEW FRONTRIER

KOUPAL BLACK CEDAR 754
OAR 1166 of BLACK CEDAR 754
 SINCLAIR DONNA 6RV17

COLE CREEK BLACK CEDAR 46 P
 KOUPAL ELBA 0187 JUNEAU
 SINCLAIR RITO 9R7
 SINCLAIR DONNA 3B33

DOB				BW	WW	YW	TEST GAIN				WDA	Scrotal	
3/27/2024				83	712	1251	4.2				3.2	37 cm	
CED	BW	WW	YW	MILK	DOC	BW PCT	WW PCT	YW PCT	SC PCT	IMF PCT	REA PCT	RIB PCT	TEND PCT
3	2.7	69	131	25	25	71	42	27	8	8	27	73	59

Double bred Black Cedar 754. Top marbling calf on the sale. Should have excellent udder quality and great disposition.

LOT 420



OAR 8605: Mother to herd sire OAR 216 BLACK CEDAR. Granddam to lots 421,423, 426.



OAR BEYOND 422

KOUPALS B&B INFINITY 9012
KOUPALS B&B BEYOND 1066
 B&B BLKBD PROGRESS 3044

KOUPALS B&B DETAIL 7070
 B&B ZARA 6078
 LIMESTONE REAL Mc COY W831
 B&B BLKBD PROGRESS 002

SVR RANGE MASTER 3164
OAR 7512 of FOREVER FRANK
 OAR 5123 of FOREVER FRANK

CANDOLIER FOREVER 376
 S C C ENCHANTRESS 3F1 X412
 SVR RANGE MASTER 3164
 SJW Ms UPWARD 954 1237

DOB				BW	WW	YW	TEST GAIN				WDA	Scrotal		
4/25/2024				82	724	1368	2.4				3.5	40 cm		
CED	BW	WW	YW	MILK	DOC	BW PCT	WW PCT	YW PCT	SC PCT	IMF PCT	REA PCT	RIB PCT	TEND PCT	
7	1.2	62	110	24	21	35	65	64	35	59	54	86	86	

If you are looking to add eye appeal to your herd this is your bull. Lots of growth in this calf and will make a good replacement pen of heifers. Last year, his full brother sold to Jed Anliker, Forbes, ND.

OAR 216 BLACK CEDAR 423

KOUPAL BLACK CEDAR 754
OAR 216 BLACK CEDAR
 OAR 8605 of SAV RENOWN 3439

COLE CREEK BLACK CEDAR 46 P
 KOUPAL ELBA 0187
 SAV RENOWN 3439
 OAR 6490 of NEW FRONTRIER

EMULATION N BAR 5522
SVR JUANADA of ROSE 4545
 INDRELAND JUANADA ANNE 5403

EMULATION 31
 ANKONY 8F78 LASS 8F275
 D H D TRAVELER 6807
 I A FORE VIKING 383

DOB				BW	WW	YW	TEST GAIN				WDA	Scrotal		
4/10/2024				90	726	1293	3.9				3.3	41 cm		
CED	BW	WW	YW	MILK	DOC	BW PCT	WW PCT	YW PCT	SC PCT	IMF PCT	REA PCT	RIB PCT	TEND PCT	
2	3.2	76	116	24	14	80	26	52	36	62	70	47	50	

Top 26% weaning weight calf out of a 15-year-old cow. His mother has a mouthwatering udder. Study this pedigree, he goes back to a tremendous 5522 and 6807 cow, who we flushed last summer and plan to flush again. These are genetics that are priceless, for fertility and longevity.



OAR BEYOND 424

KOUPALS B&B INFINITY 9012
KOUPALS B&B BEYOND 1066
 B&B BLKBD PROGRESS 3044

KOUPALS B&B DETAIL 7070
 B&B ZARA 6078
 LIMESTONE REAL Mc COY W831
 B&B BLKBD PROGRESS 002

OAR 842 RECHARGE
OAR 0G6 of 842 RECHARGE
 OAR G6 MISS PIGGY of CHARLO

SAV RECHARGE 3426
 SJW Ms BANDO 598 7184 842
 COLEMAN CHARLO 0256
 N-BAR SHADOW 181

DOB				BW	WW	YW	TEST GAIN				WDA	Scrotal		
4/12/2024				70	604	1177	3.9				3.0	39 cm		
CED	BW	WW	YW	MILK	DOC	BW PCT	WW PCT	YW PCT	SC PCT	IMF PCT	REA PCT	RIB PCT	TEND PCT	
11	-0.16	52	96	28	25	13	86	83	59	35	61	69	58	

Use this bull on heifers and to control your mature cow size. Tremendous docility back to a Coleman pedigree (Miss Piggy pictured in the back of the catalog).

OAR PATHFINDER 425

KOUPALS B&B PATHFINDER 8106
KOUPALS B&B PATHFINDER 2093
 B&B YOUNG LUCY 9057

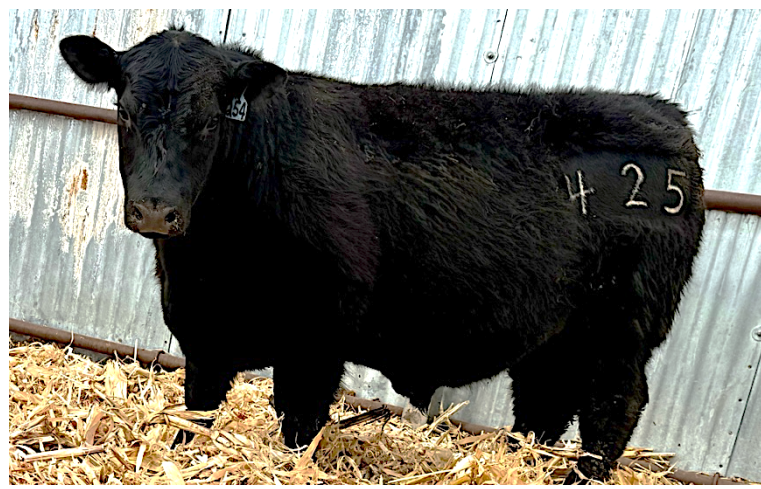
LT ENTERPRISE 5213
 B&B BLKBD PROGRESS 3015
 KOUPALS B&B DETAIL 7070
 B&B YOUNG LUCY 5038

KOUPAL ANGUS BREEDING
OAR 254 of KOUPAL
 KOUPAL ANGUS BREEDING

KOUPAL ANGUS BREEDING
 KOUPAL ANGUS BREEDING
 KOUPAL ANGUS BREEDING
 KOUPAL ANGUS BREEDING

DOB				BW	WW	YW	TEST GAIN				WDA	Scrotal		
4/12/2024				72	718	1367	4.9				3.5	38 cm		
CED	BW	WW	YW	MILK	DOC	BW PCT	WW PCT	YW PCT	SC PCT	IMF PCT	REA PCT	RIB PCT	TEND PCT	
8	0.63	54	99	24	18	25	82	80	22	79	54	24	58	

Here is a calf with calving ease, thickness, and eye appeal.



OAR 216 BLACK CEDAR 426

COLE CREEK BLACK CEDAR 46 P
OAR 216 BLACK CEDAR
 OAR 8605 of SAV RENOWN 3439

C H QUANTUM 6247
 COLE CREEK CLOVA JUANADA 67
 SAV RENOWN 3439
 OAR 6490 of NEW FRONTRIER

CANDOLIER FOREVER 376
SVR ENCHANTRESS 3F1-3549
 S C C ENCHANTRESS 3F1 X412

FOREVER of WYE
 BARB 157 FOREVER E C
 EMULATION N BAR 5522
 N BAR ENCHANTRESS 4908

DOB				BW	WW	YW	TEST GAIN				WDA	Scrotal		
4/10/2024				84	690	1112	2.5				2.8	37 cm		
CED	BW	WW	YW	MILK	DOC	BW PCT	WW PCT	YW PCT	SC PCT	IMF PCT	REA PCT	RIB PCT	TEND PCT	
2	2.9	73	118	24	19	76	31	50	53	53	47	78	50	

Keep all the heifers out of him.

OAR BEYOND 427

KOUPALS B&B INFINITY 9012
KOUPALS B&B BEYOND 1066
 B&B BLKBD PROGRESS 3044

KOUPALS B&B DETAIL 7070
 B&B ZARA 6078
 LIMESTONE REAL Mc COY W831
 B&B BLKBD PROGRESS 002

N BAR EMULATION EXT A1747
SINCLAIR LADY 7V10
 SINCLAIR LADY 3T8 4465

N BAR EMULATION EXT
 N BAR CLOVA PRIDE U3031
 N BAR EXPLOSION TNT
 IDEAL 4465 OF 6807 4286

DOB				BW	WW	YW	TEST GAIN				WDA	Scrotal		
4/22/2024				84	730	1194	2.6				3.0	38 cm		
CED	BW	WW	YW	MILK	DOC	BW PCT	WW PCT	YW PCT	SC PCT	IMF PCT	REA PCT	RIB PCT	TEND PCT	
2	2.9	72	142	23	23	74	33	15	64	31	63	65	86	

Top 15% in EPD yearling weight. Keep the females. Will make a big time set of bred heifers.

LOT 426



LOT 427



18 Month Olds

OAR BEYOND 350

KOUPALS B&B INFINITY 9012
KOUPALS B&B BEYOND 1066
 B&B BLKBD PROGRESS 3044

KOUPALS B&B DETAIL 7070
 B&B ZARA 6078
 LIMESTONE REAL Mc COY W831
 B&B BLKBD PROGRESS 002

LEWIS ANGUS BREEDING
OAR L25 of LEWIS ANGUS
 LEWIS ANGUS BREEDING

LEWIS ANGUS BREEDING
 LEWIS ANGUS BREEDING
 LEWIS ANGUS BREEDING
 LEWIS ANGUS BREEDING

DOB				BW	WW	YW	TEST GAIN				WDA	Scrotal		
9/2/2023				86	768	1270	3.3				2.0	37 cm		
CED	BW	WW	YW	MILK	DOC	BW PCT	WW PCT	YW PCT	SC PCT	IMF PCT	REA PCT	RIB PCT	TEND PCT	
0	3.5	77	133	27	20	84	23	25	7	61	40	51	69	

Use on cows, will add pounds for weaning and yearling weights. Top 7% for scrotal.

OAR BEYOND 351

KOUPALS B&B INFINITY 9012
KOUPALS B&B BEYOND 1066
 B&B BLKBD PROGRESS 3044

KOUPALS B&B DETAIL 7070
 B&B ZARA 6078
 LIMESTONE REAL Mc COY W831
 B&B BLKBD PROGRESS 002

CONNEALY THUNEDER
OAR 8870 of CONNEALY THUNEDER
 OAR 8702 of UNCHARTED 271

BALDRIDGE KABOOM K243 KCF
 PARKA of CONANGA 241
 HOFF UNCHARTED 271
 OAR 702 of 2RT2 FANCI LADY

DOB				BW	WW	YW	TEST GAIN				WDA	Scrotal		
8/31/2023				85	800	1655	6.18				2.7	41 cm		
CED	BW	WW	YW	MILK	DOC	BW PCT	WW PCT	YW PCT	SC PCT	IMF PCT	REA PCT	RIB PCT	TEND PCT	
4	2.3	54	100	27	21	60	84	79	20	42	35	25	51	

Here is an older aged bull that will cover some ground. Don't be afraid of his blue eye, he is a top-quality calf. 351 goes back to one of our original donor cows 702. He will add weaning and yearling weight to your program. Recommend using him on cows.





OAR Miss Piggy with her Beyond calf. Granddam to Lot 424.



Beyond's mother, B&B BLKBD PROGRESS 3044



Our newest donor cow Coleman Donna 3263. We are exciting to get her into production.



First calf heifer OAR 317V. Her Granddam is Lot 427's Dam.



Koupal's famous donor cow B&B BLKBD PROGRESS 3015. Granddam to our herd sire B&B PATHFINDER 2093.



JUST SEARCH...
OPITZ ANGUS RANCH

Meet GDAR Bardolier 432!

He is our new herd sire from the legendary Gartner-Denowh Angus Ranch.

His great-grandmother is GDAR Game Day 449's dam.

We bought him because he will be our outcross that adds calving ease,

maternal genetics, and fertility back in angus cattle. He will work wonderful on our

Coleman and Juneau 807J daughters and granddaughters. Look for his calves on the 2027 sale.



OPITZ

angus ranch

Tom Opitz
46034 265th St.
Hartford, SD 57033

THE BULLS ARE EAR CORN & CAKE BROKE,
THEY ARE READY TO GO TO WORK!!